



WESTERN RANGE CAMPS



Made in America



Hand crafted, customizable and built to last.

Western Range Camps, LLC * 1145 S. Blackhawk Blvd, Mt Pleasant, Utah 84647 * 435-462-5300 * www.wrcamps.com



At Western Range Camps we specialize in the design, manufacture and sale of the highest quality Range Camps, Sheep Camps, Commissaries, Toy Haulers and Teardrop Trailers.

If your looking for something just a little different than the normal RV. If your wanting something a little more rugged, a little more durable, something with better insulation and longevity, you have come to the right place. We offer a camp that is warm and inviting but also rugged and durable. We want to get to know you and how you will use the camp and then customize it to fit your personal needs.



Western Range Camps Advantages:

Comfort Warmth Durable Reliable Space Efficient
Hand Crafted and Built to Last

- Wood burning stove; using outside combustibile air
- Fire-resistant materials for safe and comfortable surroundings
- Plush full or queen size mattress
- Top-of-the-line appliances
- Sturdy cabinetry
- Heavy gauge hinges and hardware
- Trimmed wood work
- Customizable to fit your needs



Features and Options



Made in America

XL Camp Spec's

Standard Features

Large Wood Stove
Pillow-Top Queen Mattress
Trundle Bed – Full Mattress
LED Lights
7 cu ft Refrigerator / Freezer
3-Burner Gas Cook Top w/Oven
Range
Forced Air Furnace
Wood Look Vinyl Flooring – *for waterproofing and durability*
Bench Cushions
Curtains
2 – 30 lp Propane Tanks
Gas Light
Egress Window
LP/CO Detector and Smoke Alarm
Fire Extinguisher
Rear Receiver
Rear Stabilizer Jacks

Entertainment Package

12 volt TV/DVD
AM/FM/CD Radio w/Speakers
Satellite Ready

Water Package

Bathroom – Shower, Toilet,
Sink/Vanity or Extra Pantry
Double Sink
Outside Shower
6 gallon Water Heater
Electric Water Pump
40 gallon Fresh Water Tank
35 gallon Grey Water Tank
35 gallon Black Water Tank
Gravity & City Water Hook-Up's
Black & Grey Water Release Hook-
Ups

Electrical Package

2 – 6 volt Deep Cycle Batteries
12 V DC Outlet
120 VAC Outlet
100 w Solar Panel w/Solar
Controller
Electrical Panel (120vac/12vdc
Converter)

Specifications

Dry Weight: 8,300 lbs
Tongue Weight: 900 – 1200 lbs
15" Load D Rated Tires
Sleeps: 4 -7
Length: 27'
Interior Length: 22'
Width: 92"
Interior Width: 88"
Height: 11'
Interior Height: 84"



Features and Options



Made in America

25' Camp Spec's

Standard Features

Small Wood Stove
Pillow-Top Queen Mattress
Trundle Bed – Full Mattress
LED Lights
7 cu ft Refrigerator / Freezer
3-Burner Gas Cook Top w/Oven
Range
Forced Air Furnace
Wood Look Vinyl Flooring – *for
waterproofing and durability*
Bench Cushions
Curtains
2 – 30 lb Propane Tanks
Gas Light
Egress Window
LP/CO Detector and Smoke Alarm
Fire Extinguisher
Rear Receiver
Rear Stabilizer Jacks

Entertainment Package

12 volt TV/DVD
AM/FM/CD Radio w/Speakers
Satellite Ready

Water Package

Bathroom – Shower, Toilet
Double Sink
Outside Shower
6 gallon Water Heater
Electric Water Pump
40 gallon Fresh Water Tank
35 gallon Grey Water Tank
35 gallon Black Water Tank
Gravity & City Water Hook-Up's
Black & Grey Water Release Hook-
Ups

Electrical Package

2 – 6 volt Deep Cycle Batteries
12 V DC Outlet
120 VAC Outlet
100 w Solar Panel w/Solar
Controller
Electrical Panel (120vac/12vdc
Converter)

Specifications

Dry Weight: 7,400 lbs
Tongue Weight: 900 – 1200 lbs
15" Load D Rated Tires
Sleeps: 4 - 5
Length: 25'
Interior Length: 20'
Width: 92"
Interior Width: 88"
Height: 11'
Interior Height: 84"



Heritage & Heritage XL



Made in America

Heirloom Quality

The Heritage has the traditional floor plan that started it all. Sheep camps were designed to be compact and use every possible space. Examples of that would be the trundle bed and pull out table.

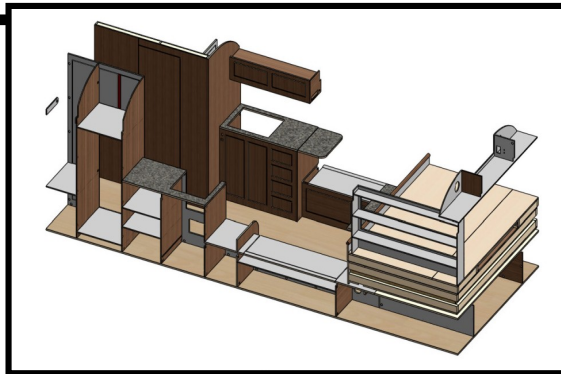
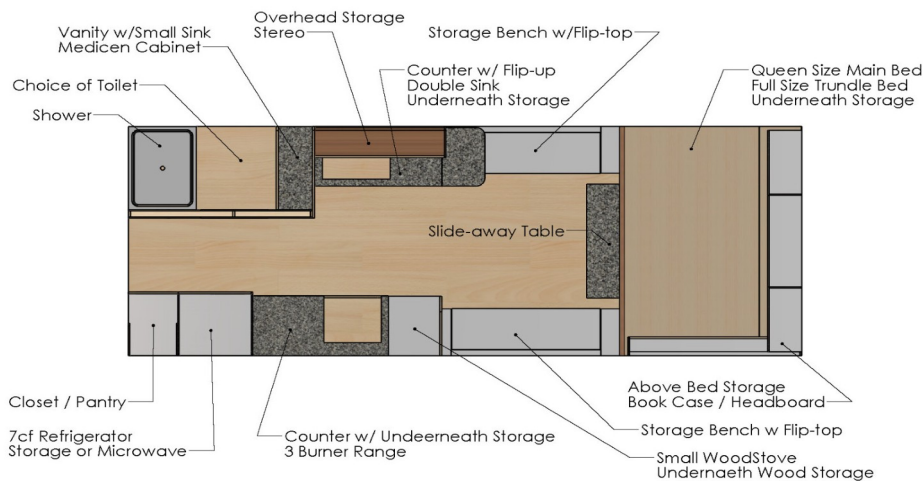
(Diamond plate sides and flip-out bracket options shown below)





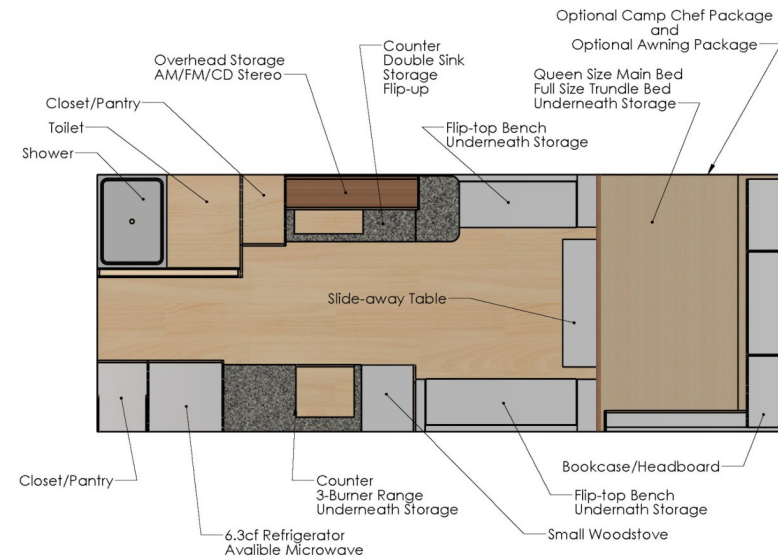
Heritage & Heritage XL

Heritage XL (Large Bathroom)



The Heritage "XL" Model shown adds 2 more feet to the overall length for additional roominess and comfort.

Heritage (Small Bathroom)



All dimensions and weights are approximate. Photos may show options. Due to constant product improvements, specifications, component parts, standard and optional equipment are subject to change without notice or obligation. Refer to standard and special features for specifics. Call for warranty details.



Teton & Teton XL



Made in America

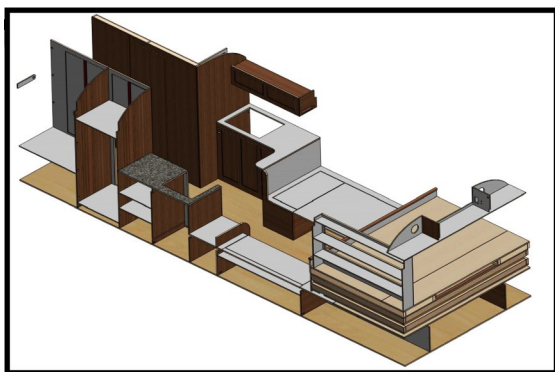
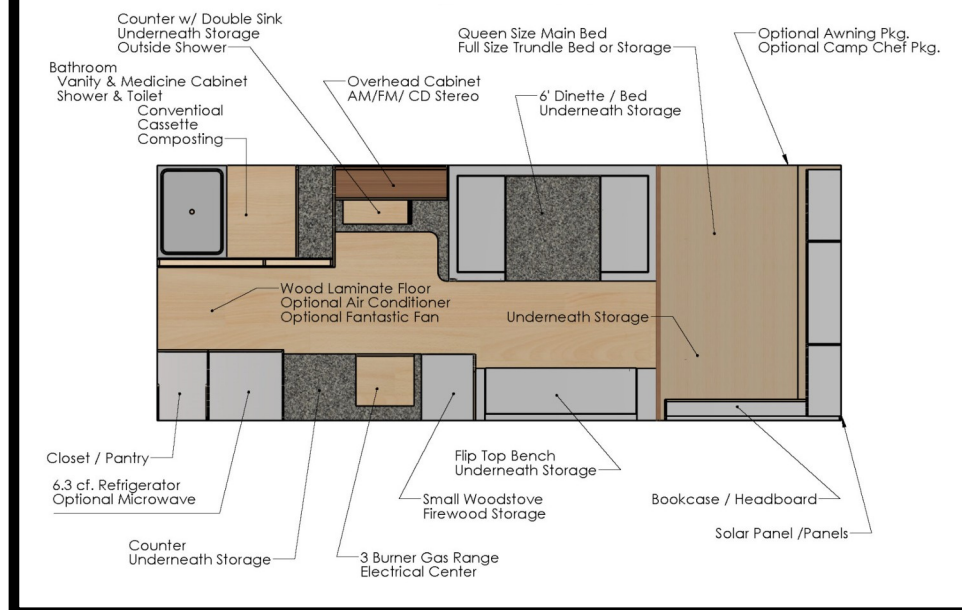
The Teton has the same high bed as the Heritage. The trundle bed is also there but normally used for storage. The dinette table can be used as the second bed, usually sleeping 2 people but still giving you access to a walk way for those on the upper bed. *(Pictured below is a custom 2-person dinette instead of the standard 4-person dinette)*





Teton & Teton XL

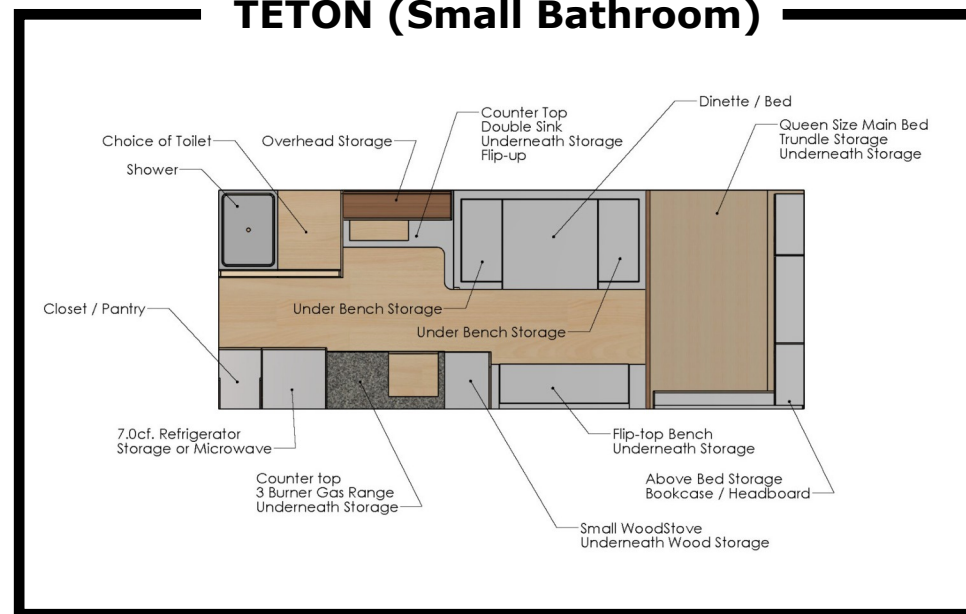
TETON XL (Large Bathroom)



The “TETON” is one of our larger models. With an excellent floor plan with extended space and a spacious bathroom.

From the harsh winters of Alaska to the brutal heat of the Arizona deserts, you can be certain that you will have a place of refuge and comfort in your New TETON.

TETON (Small Bathroom)



All dimensions and weights are approximate. Photos may show options. Due to constant product improvements, specifications, component parts, standard and optional equipment are subject to change without notice or obligation. Refer to standard and special features for specifics. Call for warranty details.



Survivalist & Survivalist XL



Made in America

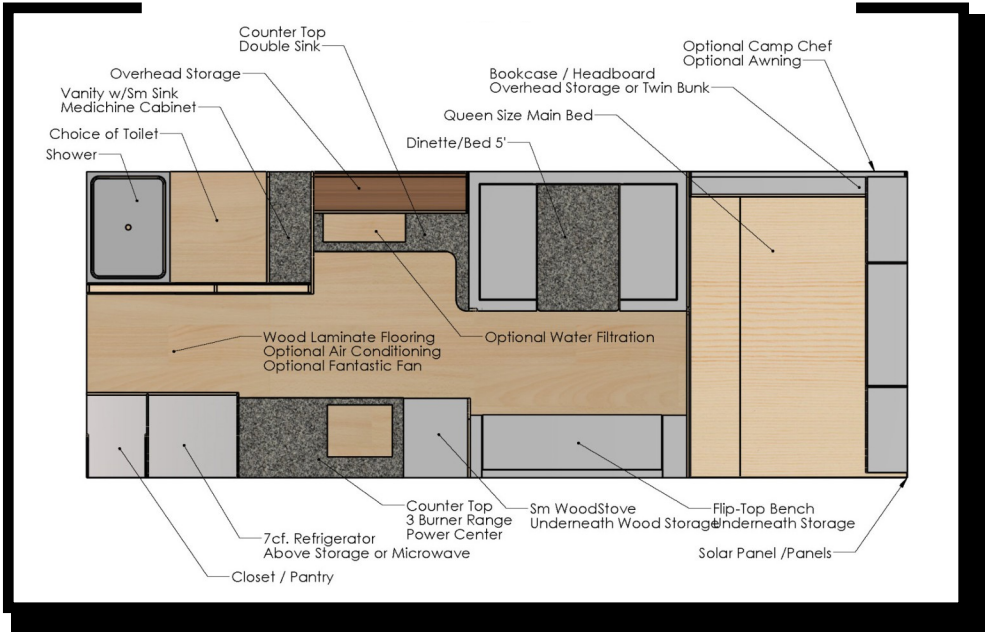
All of our camps are built to help you SURVIVE the elements but we named this camp the SURVIVALIST because it can sleep the most people and is the most versatile. The dinette table converts into a bed and can hold 2 people, the bench can be widened and hold a person, the bed can hold 2 people and we can do the upper bunk any size, or leave it out.



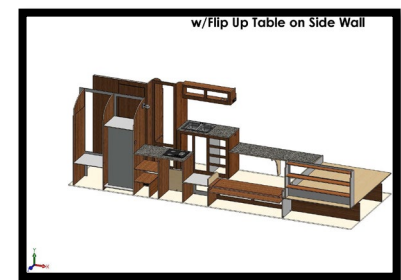
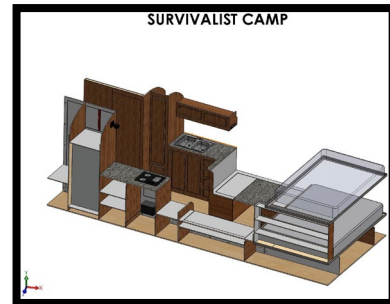
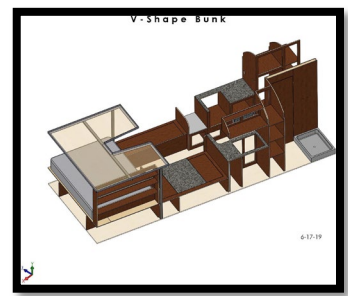
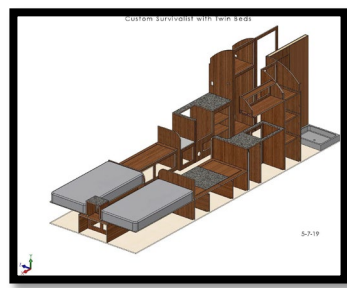
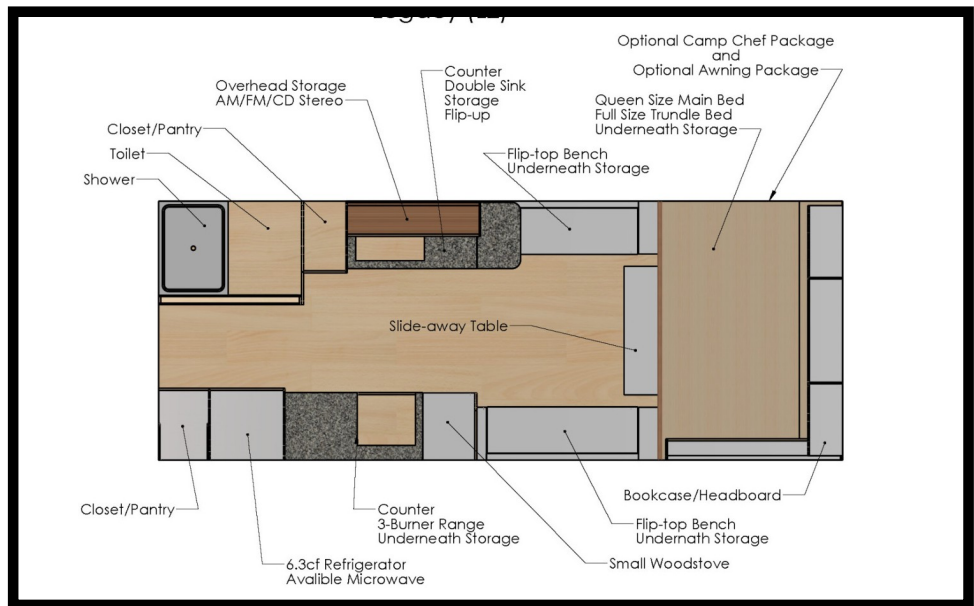


Survivalist & Survivalist XL

Survivalist XL (Large Bathroom)



Survivalist (Small Bathroom)

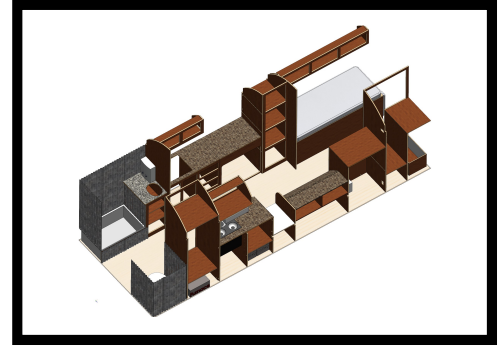
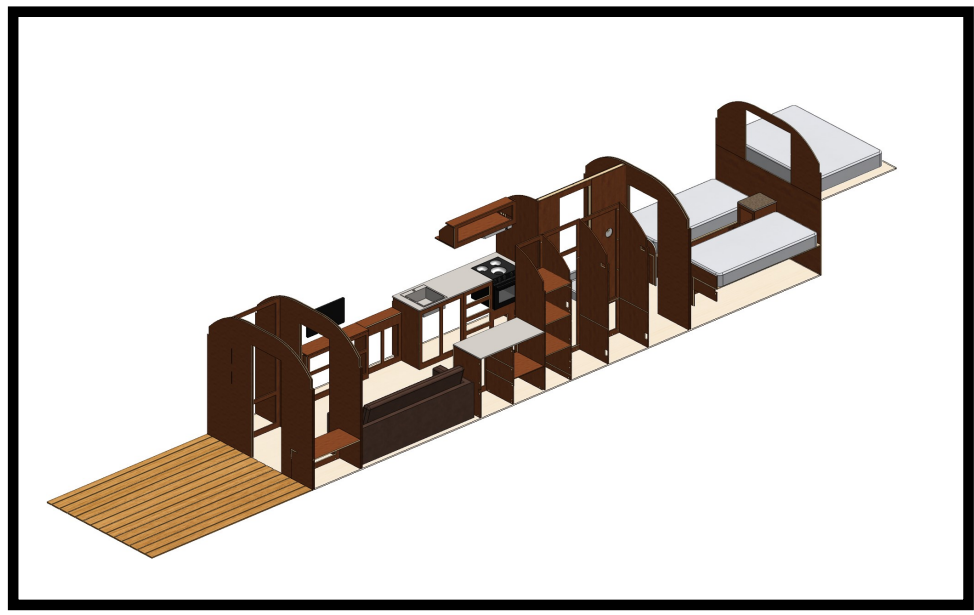


All dimensions and weights are approximate. Photos may show options. Due to constant product improvements, specifications, component parts, standard and optional equipment are subject to change without notice or obligation. Refer to standard and special features for specifics. Call for warranty details.



The GIANT Camp

Anything over 22' of living space



All dimensions and weights are approximate. Photos may show options. Due to constant product improvements, specifications, component parts, standard and optional equipment are subject to change without notice or obligation. Refer to standard and special features for specifics. Call for warranty details.



The GIANT Camp



Made in America

The GIANT Camp was designed by our awesome friend who was overseas serving our Country. He needed a place to live as he moved from base to base. He wanted a separate bedroom which gave us extra support to span the longer roof line. He also added bunks so his niece could come visit. With taller walls and a side entry door, this camp has a very comfortable feel. There are many possibilities and options available for a bigger camp or toy hauler. This camp is great for long term or permanent living but still mobile enough to travel the Country.





Features and Options



Made in America

Zion Camp Spec's

Standard Features

Small Wood Stove
Pillow-Top Full Mattress
Trundle Bed – Twin Mattress
LED Lights
2.7 cu ft Refrigerator / Freezer
3-Burner Gas Cook Top
Forced Air Furnace
Wood Look Vinyl Flooring – *for waterproofing and durability*
Bench Cushions
Curtains
2 – 30 lb Propane Tanks
Gas Light
Egress Window
LP/CO Detector and Smoke Alarm
Fire Extinguisher
Rear Receiver
Rear Stabilizer Jacks

Entertainment Package

12 volt TV/DVD
AM/FM/CD Radio w/Speakers
Satellite Ready

Water Package

Bathroom – Shower, Toilet
Single Kitchen Sink
Outside Shower
6 gallon Water Heater
Electric Water Pump
40 gallon Fresh Water Tank
35 gallon Grey Water Tank
35 gallon Black Water Tank
Gravity & City Water Hook-Up's
Black & Grey Water Release Hook-Ups

Electrical Package

2 – 6 volt Deep Cycle Batteries
12 V DC Outlet
120 VAC Outlet
100 w Solar Panel w/Solar Controller
Electrical Panel (120vac/12vdcd Converter)

Specifications

Dry Weight: 6,500 lbs
Tongue Weight: 900 – 1200 lbs
15" Load D Rated Tires
Sleeps: 4
Length: 21'
Interior Length: 16'
Width: 92"
Interior Width: 88"
Height: 11'
Interior Height: 84"



ZION



Made in America

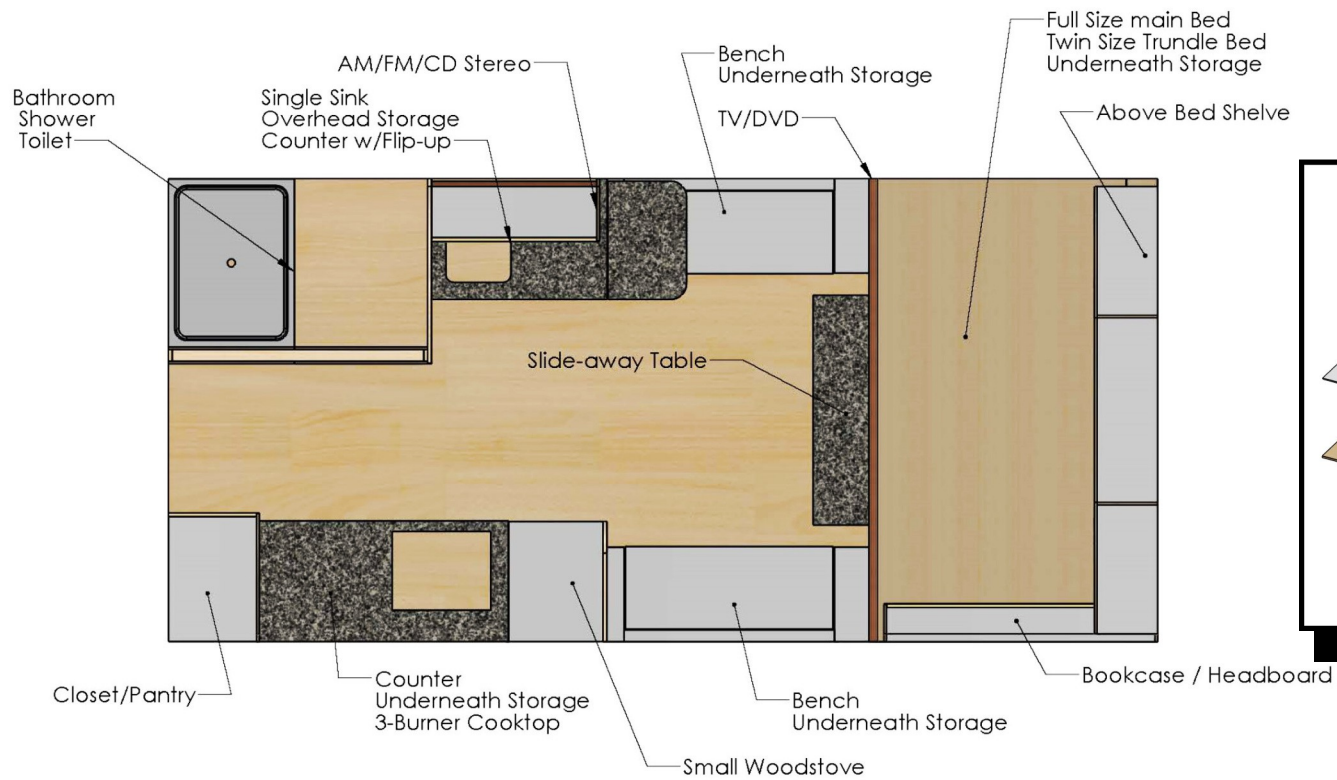
GET TO THOSE HARD TO REACH PLACES!

The Zion is a more compact camp with a "Full" main bed, "Twin" trundle bed, a 3-burner cooktop without the oven, smaller refrigerator and smaller kitchen sink.

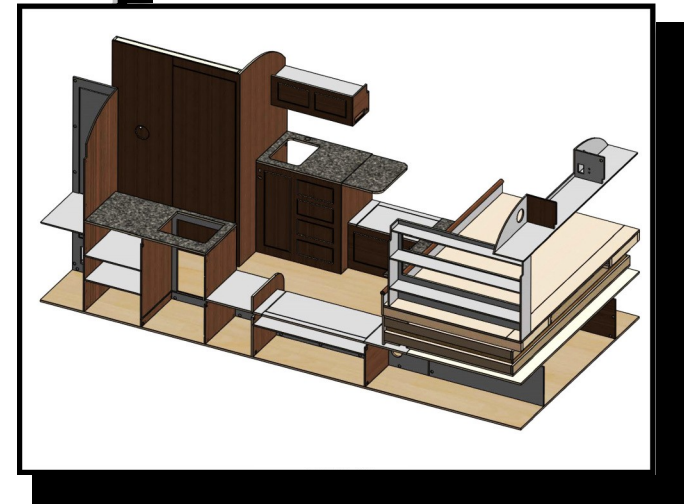
(Bed and table layout can also be customized in this size camp.)



ZION (REGULAR)



The ZION model has an optional "Bunkbed" (not shown) to add greater sleeping capacity.



All dimensions and weights are approximate. Photos may show options. Due to constant product improvements, specifications, component parts, standard and optional equipment are subject to change without notice or obligation. Refer to standard and special features for specifics. Call Western for warranty details.



Features and Options



Made in America

Frontier Camp Spec's

Standard Features

Large Wood Stove
Pillow-Top Full Mattress
Trundle Bed – Twin Mattress
LED Lights
2.7 cu ft Refrigerator / Freezer
3-Burner Gas Cook Top
Wood Look Vinyl Flooring – *for waterproofing and durability*
Curtains
2 – 30 lb Propane Tanks
Gas Light
Egress Window
LP/CO Detector and Smoke Alarm
Fire Extinguisher
Rear Receiver

Water Package

Single Kitchen Sink
5 gal Water Tank Under Sink
w/Hand Pump Faucet

Electrical Package

1 – 12 volt Deep Cycle Batteries
2 - 12 V DC Outlet
100 w Solar Panel w/Solar
Controller

Dry Weight: 4,500 lbs
Tongue Weight: 900 – 1000 lbs
15" Load D Rated Tires
Sleeps: 4
Length: 19'
Interior Length: 14'
Width: '84"
Interior Width: 80"
Height: '11'
Interior Height: "84"



FRONTIER



Made in America

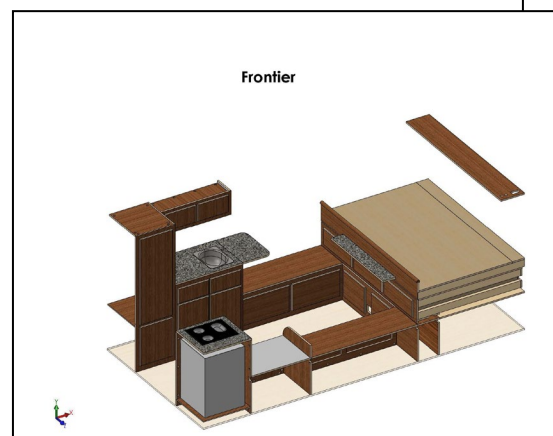
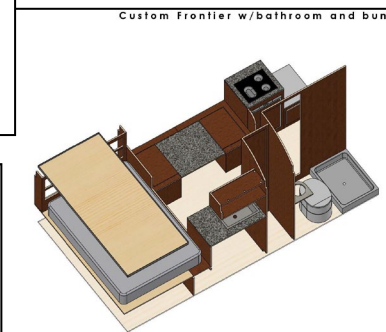
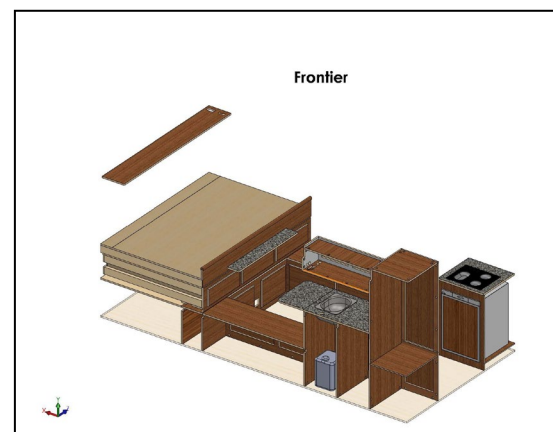
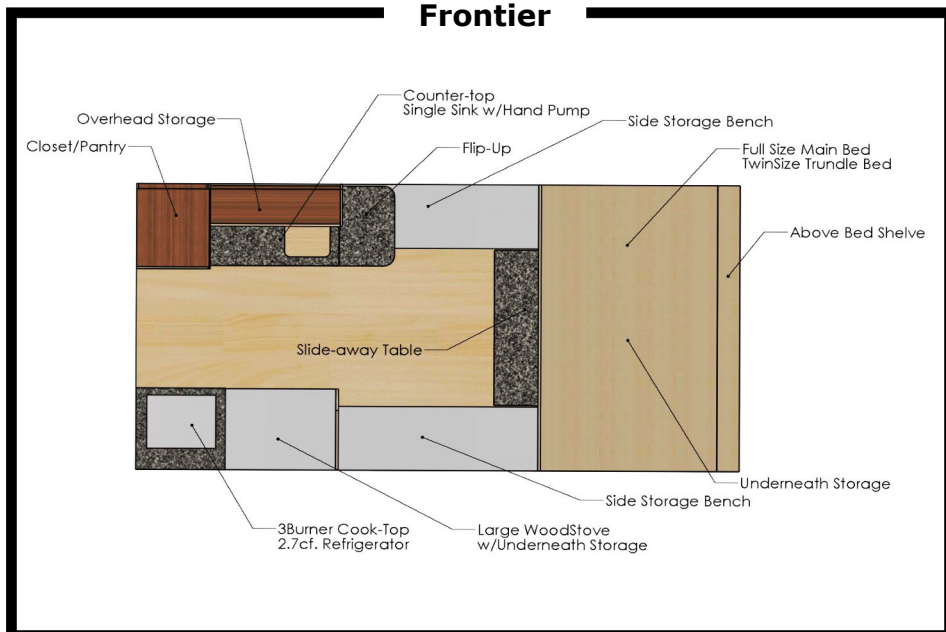




FRONTIER

The FRONTIER range camp is a staple in sheep and cattle ranching, but they also makes a great hook-up and go camper for hunters, sportsmen, back country explorers, and prepper's.

Frontier



All dimensions and weights are approximate. Photos may show options. Due to constant product improvements, specifications, component parts, standard and optional equipment are subject to change without notice or obligation. Refer to standard and special features for specifics. Call for warranty details.



Features and Options



Made in America

Kodiak Camp Spec's

Standard Features

Small Wood Stove
Pillow-Top Full Mattress
Trundle Bed – Twin Mattress
LED Lights
2.7 cu ft Refrigerator / Freezer
3-Burner Gas Cook Top
Wood Look Vinyl Flooring – *for waterproofing and durability*
Curtains
2 – 30 lb Propane Tanks
Gas Light
Egress Window
LP/CO Detector and Smoke Alarm
Fire Extinguisher
Rear Receiver

Water Package

Bathroom – Shower, Toilet Area
Single Kitchen Sink
5 gal Water Tank Under Sink
w/Hand Pump Faucet

Electrical Package

1 – 12 volt Deep Cycle Batteries
2 - 12 V DC Outlet
100 w Solar Panel w/Solar
Controller

Specifications

Dry Weight: 6,000 lbs
Tongue Weight: 900 – 1000 lbs
15" Load D Rated Tires
Sleeps: 4
Length: 21'
Interior Length: 16'
Width: 92"
Interior Width: 88"
Height: 11'
Interior Height: 84"



KODIAK

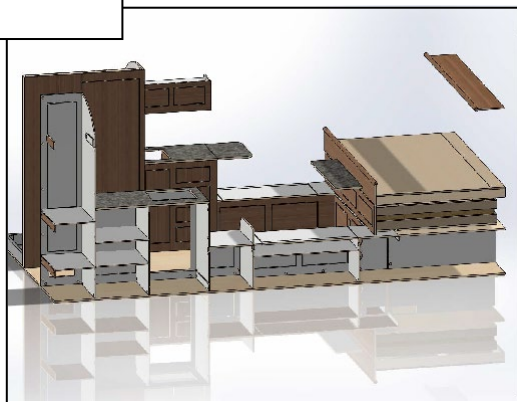
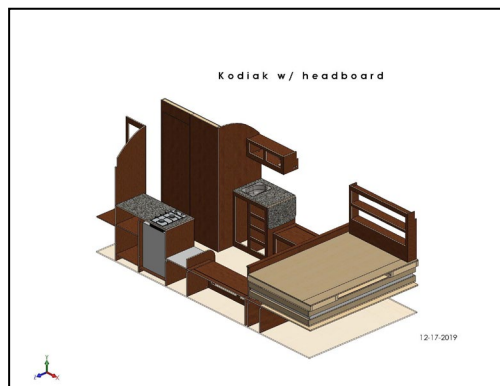
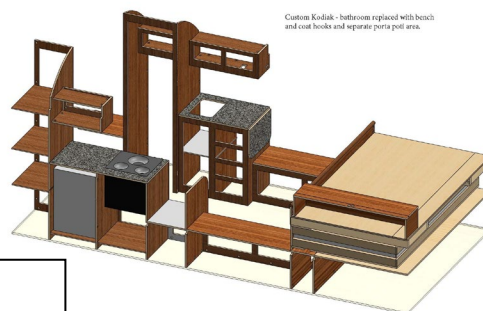


Simple, Durable, Reliable

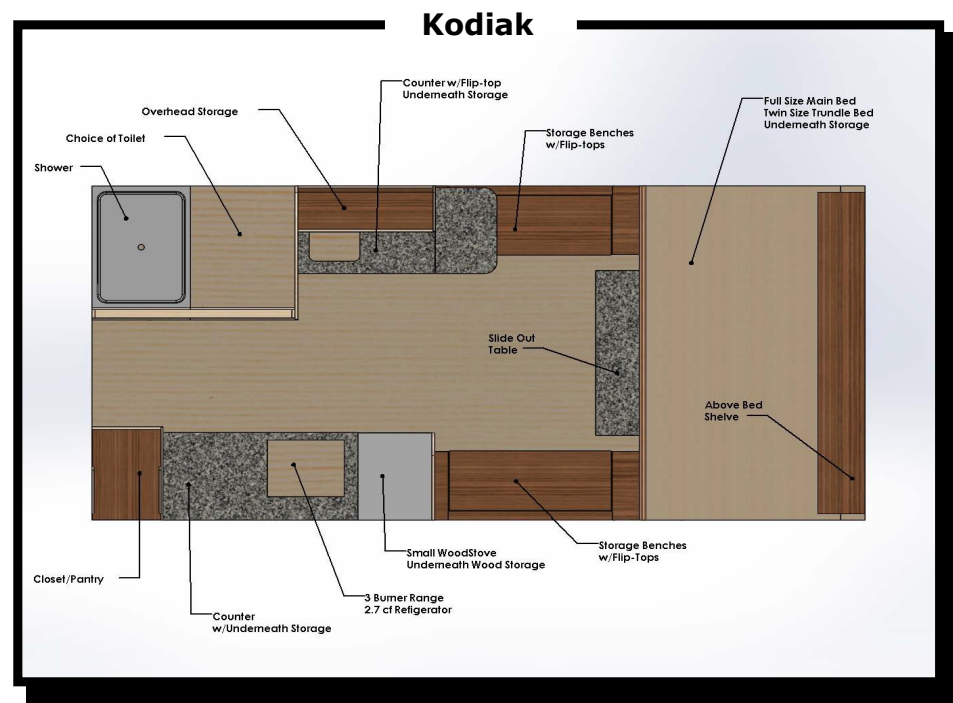




KODIAK



The Kodiak camp is designed after the Frontier. The same simplicity but is a little bigger to fit the bathroom area. This is a great camp for a herder but is also great for those that want a camp that takes little effort to maintain and has very few mechanical components to replace over time. It is a great "hook up and go" camper for hunters, sportsmen, backcountry explorers, and preppers. One size does not fit all. We can add length to this camp and change the floor plan as needed but still keep the simplicity that this camp is designed for.



All dimensions and weights are approximate. Photos may show options. Due to constant product improvements, specifications, component parts, standard and optional equipment are subject to change without notice or obligation. Refer to standard and special features for specifics. Call for warranty details.



Toy Hauler



Features and options will vary with each unit

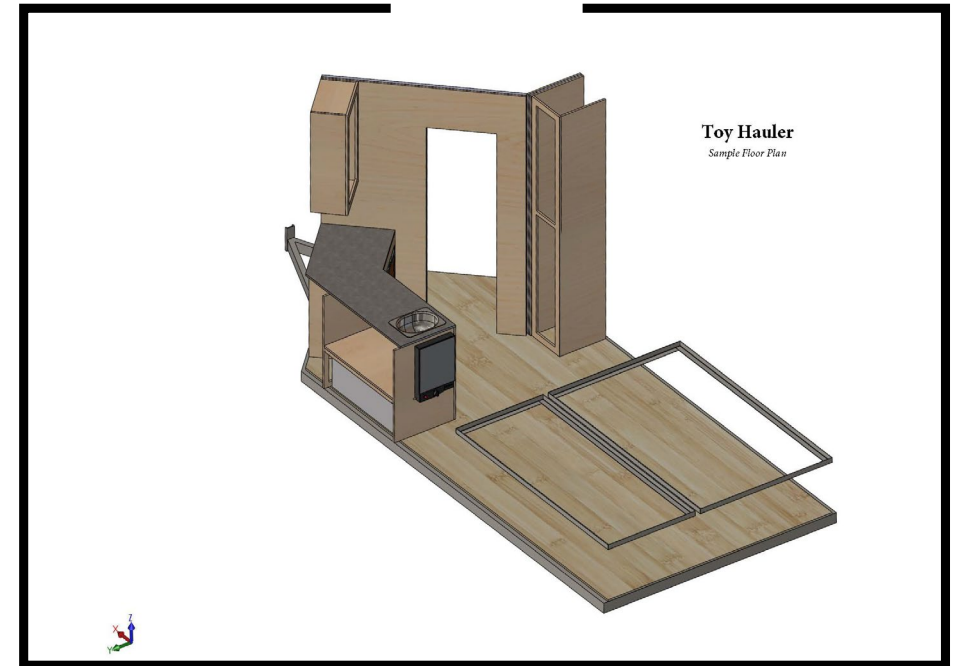
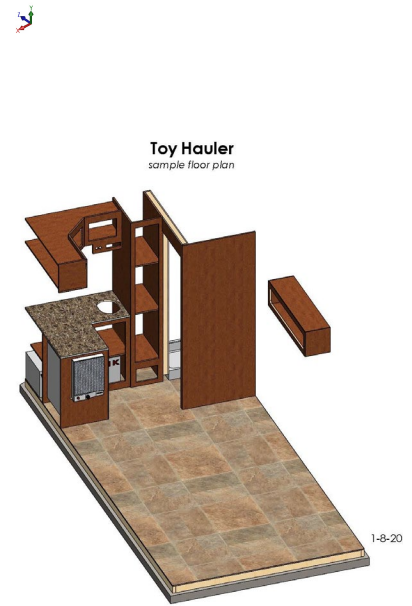
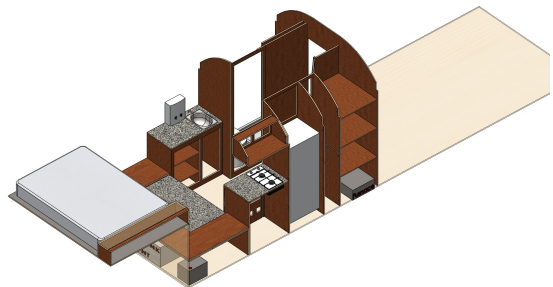




Toy Hauler

Our Toy Hauler is built from the ground up, just like our camps. You will find the same heavy duty frame under the RV with thick, well insulated floor, walls and ceiling. You can determine the length of the RV along with the ceiling height to accommodate your toys. We can do a V-Nose or slightly rounded front. We can adjust the living space and beds to fit your needs. We build a heavy duty man door and ramp/door. We can also add a second ramp/door so the RV can accommodate snowmobiles.

The floor plans on this page are a few samples of what can be done.



Pricing will be determined by the size and options you choose.



Gooseneck Option



Made in America

Gooseneck frame available for camps or toy haulers





Gooseneck



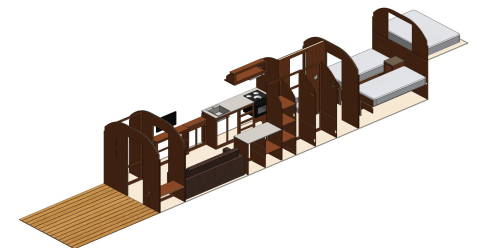
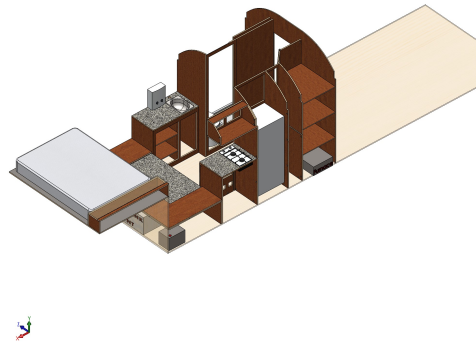
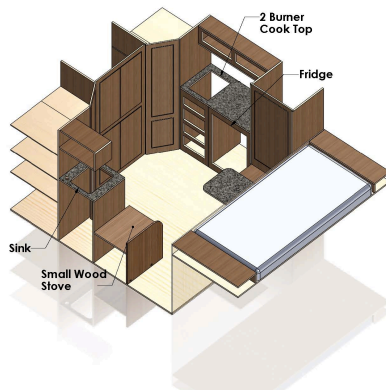
Gooseneck Camp or Toy Hauler

Custom built from the ground up to your specifications. You determine the length and what you want built on the inside. Call or email if you would like more information, to get a custom price quote, or to start building yours today.

The gooseneck camp is just another option to consider if you don't want a tongue pull trailer. This unit is also built from the ground up and you can determine what options will work best for you. We can build the sleeping area over the bed of the truck or we can add a front deck or no deck and you can use that space for storage or to carry a generator. We can add a back deck as well or we can add a garage area. You can pick the size of the living space or if there is a specific camp you like the size and floor plan of, we can incorporate that as well.

Length and interior set up can be changed to fit your needs.

Pictures of a couple of the goosenecks we have done are shown. There are many other possibilities.





Tear Drop



Features and Options will vary with each unit





Tear Drop

Our Tear Drop is just as rugged and durable as our other camps. Built with a heavy-duty steel frame and high ground clearance, this tear drop can go on the pavement or off the beaten path. Stick-built walls, floor and roof with good insulation will keep you warm and dry and out of the elements. No more nights with the wind blowing your tent down around you or sleeping on a thin mattress and feeling every rock or stick underneath you. You will sleep in comfort on our memory foam mattress. Match the exterior color with your vehicle and add custom wheels if you desire so you stand out when you are pulling this to your camping destination.



Pricing will be determined by the size and options you choose.



Custom Features

Refrigerator Options



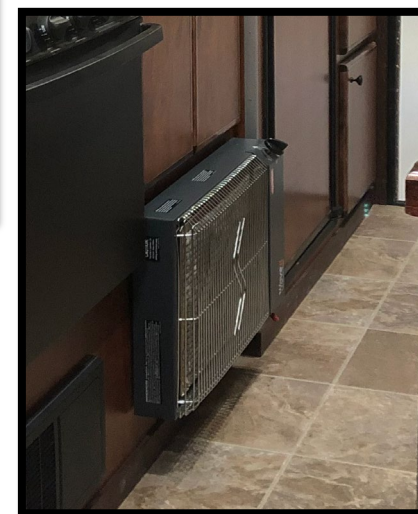
Goose Neck Frame



Pullout Camp Chef Grill



Catalytic Heater



Flip up Brackets on Solar Panel



Compositing Toilet



Custom Bunks



FEATURES WILL VARY FOR EACH MODEL, SEE INDIVIDUAL MODELS SPECIFICATION SHEETS TO DETERMINE WHAT ITEMS ARE INCLUDED IN EACH MODEL



Custom Features



Made in America

Camp Power or Inverters



Air Conditioning



Custom Floor Plans



Awnings



Custom Wheel



Custom Exterior Compartments under Camp



Toy Hauler / Deck



FEATURES WILL VARY FOR EACH MODEL, SEE INDIVIDUAL MODELS SPECIFICATION SHEETS TO DETERMINE WHAT ITEMS ARE INCLUDED IN EACH MODEL



Custom Floor Plans

Change in Cabinet Layout



Change in the Bed Layout



Change the style or size of the table

Changes to the Bathroom.and many more



Warm and Welcoming Interior



FEATURES WILL VARY FOR EACH MODEL, SEE INDIVIDUAL MODELS SPECIFICATION SHEETS TO DETERMINE WHAT ITEMS ARE INCLUDED IN EACH MODEL



a few pictures from our customers



Made in America





Pricing

**Call and get your
Quote today!**



*"Glad we found you guys,
we could not be happier
with our camp."*

Steve
North Carolina



*"First, thanks for all of the help and
patience in preparing to order our camp.
You made sure that we really got what we
wanted."*

Pat and Ernie
Nevada



*"We now own four WRC camps
and couldn't be happier"*

Anthony
Colorado





Made in America

***HONESTY, INTEGRITY, QUALITY AND HARD WORK
ARE WHAT MAKE A WESTERN RANGE CAMP!***

